



604

MIDMARK MANUAL EXAMINATION TABLE





Simple considerations in design can create advances in patient care and office efficiency.

# The efficient exam room

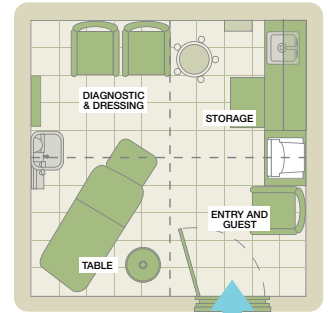


Midmark uses its wealth of experience, product design knowledge and physician research to design the most efficient primary care exam room for your practice. This efficient exam room design is intended to be fluid to meet the continually changing needs of physicians and the emergence of electronic medical records.

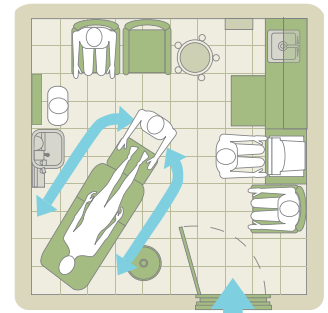
Just by making a few simple updates to your exam room, you can dramatically improve care for your patients and overall efficiency. And, these ideas can be easily implemented with almost immediate results.

Some examples of these efficiency improvements include replacing box-style examination tables with barrier-free examination tables; detailed room layout recommendations for equipment in the exam environment; and how to effectively incorporate EMR/EHRs and related technologies while protecting the overall integrity of the room.

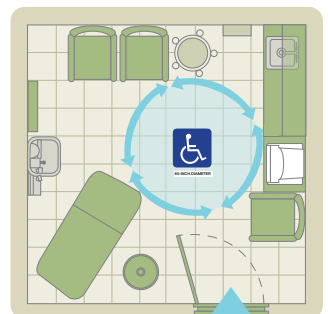
For more detailed information regarding The Efficient Exam Room, please contact Midmark Medical Customer Service at 1.800.MIDMARK, ext. 8921, or visit [midmark.com](http://midmark.com).



The four zones of the standard primary care exam room



Optimal exam room size (10' x 10') and physician's flow



The Americans with Disabilities Act recommends a 60" wheelchair turning space

# Midmark 604 Manual Exam Table



The exam table is where the practice of medicine takes place...  
the interaction between physician and patient.

Midmark's 604 Manual Examination Table was designed with the physician, staff and patient in mind and gives you the best economy exam room option available. However, this cost-effective table does not skimp on patient comfort. With the new 604, the physician can easily position patients so that they are comfortable and relaxed throughout the exam.

The new look of your exam room will also improve the overall impact of your office environment through the 604's stylized look, featuring a one-piece upholstered top. The 604 not only looks great...but is also simple to clean. In addition, the 604 is user-friendly as its pneumatic cylinder assists in easily placing the counterbalanced top in an infinite number of positions. Release handles on both sides of the top section make positioning easy.



Ultra-Premium top option is more comfortable for your patients, giving your practice an exclusive feel and elevating your reputation.



#### **Flex Drawer Design**

A flexible rear drawer design allows changing to either right-hand or left-hand access without the use of tools. This eliminates the potential for wall damage or the unkept look of pass-through drawer systems.



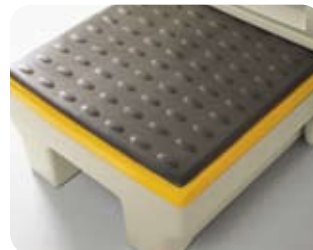
#### **Premium Comfort System™ (Patented)**

Unique elastomeric material stretched over a seat cut-out is designed to enhance patient comfort for a "chair-like" feel in an exam table. The upholstery is removable and available with optional heater.



#### **Exam Assistant® Fold-Down Drawer System (Patented)**

Provides an area to store basic pelvic and examination supplies at your fingertips. Its unique fold-down front can also turn into a work shelf for examination assistance.



#### **Large Foot Step (Patented)**

A new rubberized, easy-to-clean pad makes this footstep slip-resistant. The 40% larger footstep has bright yellow edging to assist the visually impaired in seeing the step edges clearly.



#### **Heavy Construction**

The solid construction of this table can support larger patients up to 500 pounds, as well as provide many years of use.

# Complete your facility with Midmark products

Midmark offers a full line of products to meet all your needs, from exam tables, sterilization and casework, to lighting, seating and diagnostics. With an extensive selection of high-quality products, our trusted equipment can help you deliver the most efficient patient care.

## **Barrier-Free® Solutions**

Midmark's revolutionary line of Barrier-Free® examination tables offers physicians the capability of bringing a table down to a height of 18" to accommodate patients who are elderly, less able or have some other barrier to getting up onto a table easily. The table (shown at right) can then extend up to 37" to make the physician's access to the patient much easier and more effective. The tables reduce the likelihood of distress and injury to physicians as well as to patients. For those patients who may have difficulty accessing an industry standard, box-style exam table, Barrier-Free® examination tables help maintain their dignity and reduce anxiety.



Midmark is more than just a manufacturer of healthcare products. We are a provider of innovative solutions that work for you.

### Midmark Casework

Designed for the medical environment, Midmark's durable casework, cabinets and mobile carts offer a number of different configurations to maximize storage and space in your exam room or facility. They feature seamless drawers made of durable polystyrene, which easily reconfigure to meet changing needs. Their modularity enables you to remodel, move on demand and be flexible. And no tools are required when changing drawer configurations.



### Midmark 427 Air Lift Physician Stool

The hand-operated Midmark 427 adjusts to fit physicians' specifications. Its contoured seat is ergonomically designed for comfort while optional armrests and backrests are also available for added support.



### Ritter 152 Halogen Exam Light

The Ritter 152 light provides superior, white, shadow-free illumination while remaining cool to the touch. It offers the option of maneuverability, making examining your patients easier than ever.



### Ritter 261 Waste Receiver with Bag Retaining Ring

With the Ritter 261, hands-free waste disposal is safe and effortless. Its sturdy, seamless construction allows for easy cleaning and helps prevent leakage of waste materials.



### Midmark 662 Towel, Glove & Cup Dispenser

The Midmark 662 is the convenient solution to your sanitary needs.



### Midmark 663 Instrument Panel

The Midmark 663 Instrument Panel houses physicians' most commonly used diagnostic equipment in one convenient location.



### Midmark 664 Dressing Nook

When opened, the Midmark 664 Dressing Nook is a mirrored dressing area with storage for personal items and clothing; closed, it appears as a color-coordinated wall panel with insert colors available in standard Midmark colors.

**Specifications**  
**Model 604 Examination**  
**Table - 115V**

Height with Upholstery:  
 Premium/Ultra-Premium Top:  
 33.38" (84.8 cm)

Length with Footrest  
 Extended: 76.0" (193.0 cm)

Patient Weight Capacity:  
 500 lbs. (226.8 kg)

Electrical Receptacle:  
 (115 VAC, 5 AMPS Max.)  
 Duplex, hospital grade,  
 electrical receptacle  
 on patient's left side

Paper Roll Storage:  
 4 Rolls - 21" x 3.5"  
 (53.3 cm x 8.9 cm)

Paper Roll Holder:  
 Holds 21" x 3.5" Paper Roll  
 (53.3 cm x 8.9 cm)

Stirrups are standard

**Electrical Ratings**

115 VAC, 50/60HZ, 5.0 AMPS  
 (with receptacle)

115 VAC, 50/60HZ, 5.5 AMPS  
 (with drawer heater)

115 VAC, 50/60HZ, 6.5 AMPS  
 (with drawer heater and  
 heated top)

UL 60601-1 Standard  
 for Safety

Can/CSA #601.1-M90  
 Standard for Safety

CE Mark

**Options**

Premium/Ultra-Premium Top:  
 28.5" W x 59.5" L  
 (72.4 cm W x 151.1 cm L)

Pelvic Tilt (1.5 degrees or  
 7 degrees)

Heated Drawer (45 watt)

**Accessories**

Knee Crutches

Procto Rest

Welch Allyn® Light Bracket

Urology Pan

Stainless Steel Pan



**Premium Solid**  
**Upholstery Colors**

Blueberry

Cashmere Blue

Silver Sage

Terra Cotta

Fossil Grey

Tea Green

Black

**Premium Pattern**  
**Upholstery Colors**

Belagio

Capri

Siena

Treviso

Firenze

Tuscany

**Ultra-Premium Solid**  
**Upholstery Colors**

Ultra-Pacific Blue

Ultra-Sky

Ultra-Spruce

Ultra-Canyon

Ultra-Arctic

Ultra-Olivine

Ultra-Raven Wing



CARB 93120.2 Phase 1 Compliant

Midmark is an ISO 13485 and ISO 9001 Certified Company.  
 For more information or a demonstration, contact your Midmark  
 dealer or call: 1-800-MIDMARK Fax: 1-800-365-2499  
 Outside the U.S.A. call: 1-937-526-3662 Fax: 1-937-526-8392  
 or visit our website at midmark.com

© 2005 Midmark Corporation  
 60 Vista Drive P.O. Box 286 Versailles, Ohio 45380-0286  
 Products subject to improvement changes without notice  
 Litho in U.S.A. 007-0562-00 Rev. C1 (11/09)

