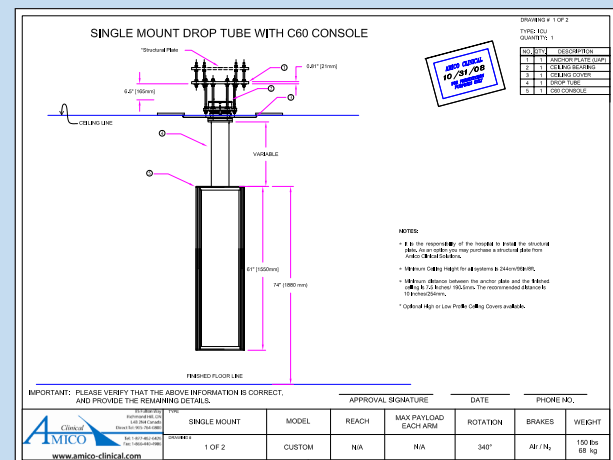


# SATURN SERIES SPECIFICATIONS

INTERNAL CAPACITY OF DROP TUBE	12 hoses, 4 circuits, 8 data jacks
BEARING SYSTEM (ROTATING OPTION)	Rolling needle bearings are standard
BRAKING SYSTEM (ROTATING OPTION)	Mechanical friction & pneumatic are standard
ROTATION OF SERVICE CONSOLE	340° (Fixed option also available)
NUMBER OF GASES PER CONSOLE	Up to 12 outlets depending on size of console
NUMBER OF ELECTRICAL PER CONSOLE	Up to 24 duplex depending on size of console
LENGTH OF SERVICE CONSOLES AVAILABLE	20" – 60" (51-152cm)
OUTLET TYPES AVAILABLE	DISS, Ohmeda, Puritan Bennett, Chemetron, Oxequip
FINISH	Powder-coated finish
CEILING STRUCTURE	Supplied by Customer
UNIVERSAL ANCHOR PLATE	Supplied by Amico
INSTALLATION	1-2 hours
MOUNTING ACCESSORIES	Full accessories catalogue available
CERTIFICATIONS	UL/CSA, ETL, OSHPD
PRODUCT WARRANTY	5 years
APPLICATIONS	OR, ICU
PRODUCT ORIGIN	All products (including parts & components) are North American manufactured



## TYPICAL DRAWING



**Amico Clinical**

Tel: 905.764.0800

Fax: 905.764.0862

www.amico.com

REVISED SEPTEMBER 2009