

# Noble Series Neonatal Intensive Care Unit (NICU)



## General Specifications

The Neonatal Intensive Care Unit shall be an Amico Noble Series.

The NICU system shall use one or more horizontal service fascia to locate services such as medical gas, electrical and communications.

The horizontal and vertical accessory channels shall be a complete part of the assembly and shall be flush with the front of the unit.

The vertical service chase, if required, shall provide concealment of electrical and medical gas piping. Accessory tracks are on the front of the vertical chase. Monitor channel, if required, can be mounted directly to the vertical chase.

The removable, fire-retardant access panels shall be finished with high-pressure plastic laminate on the outside face and a fire-retardant backing sheet on the reverse. A wide variety of colors are available from Wilson Art.

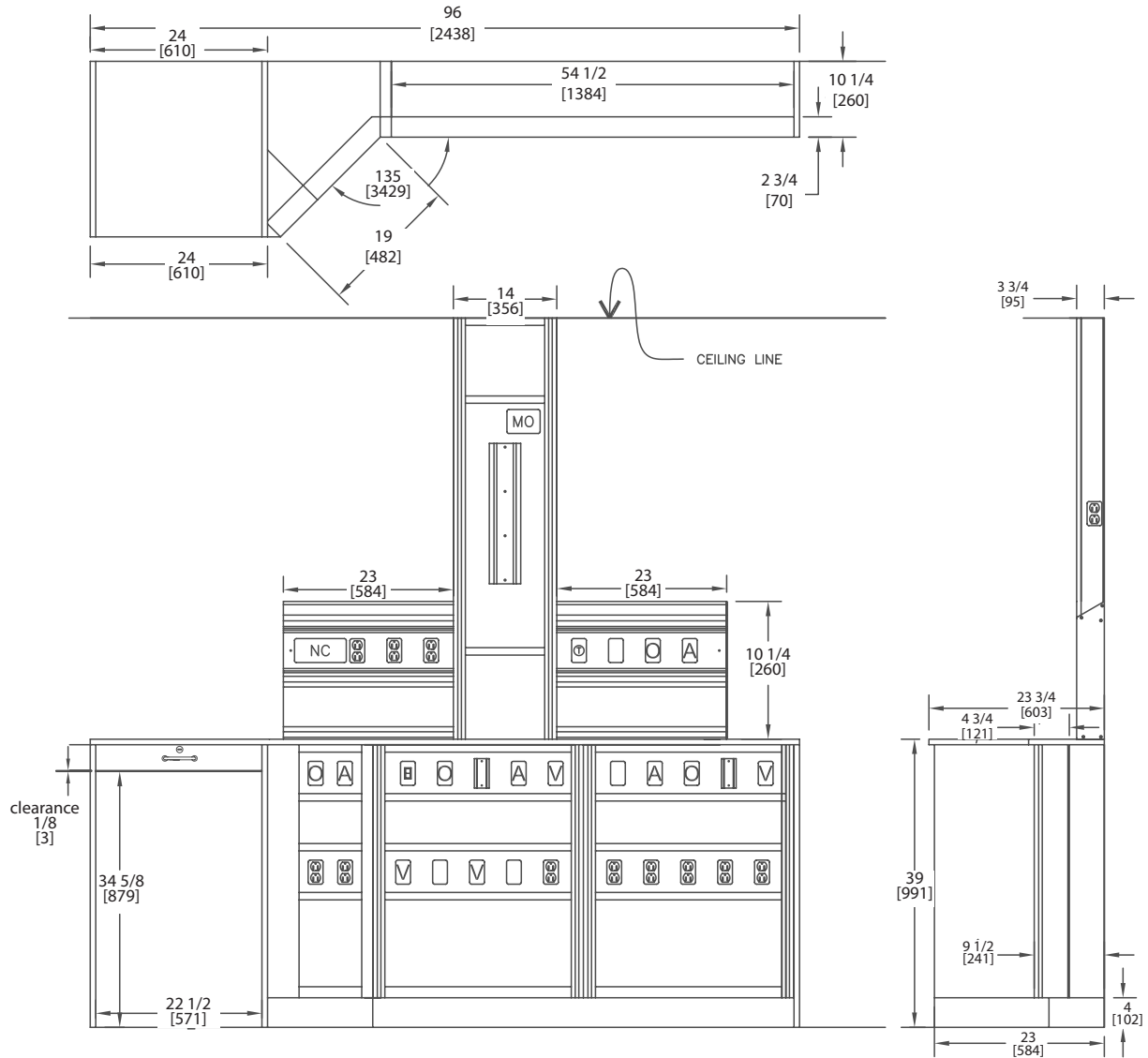
## Features

- Completely customizable to meet individual servicing needs
- Horizontal and vertical accessory management
- Over 2000 colors to match existing decor
- Designed to provide full visibility of infants and accommodate circulation of staff and family
- Easy to clean and maintain
- 5 year warranty on all parts and accessories
- Removable access panels for maintenance and future expansion
- Single point terminations for medical gas and electrical, pre-wired and pre-piped at the factory

# Noble Series Neonatal Intensive Care Unit (NICU)

## Dimensions

Inch  
[mm]



Distributed By: